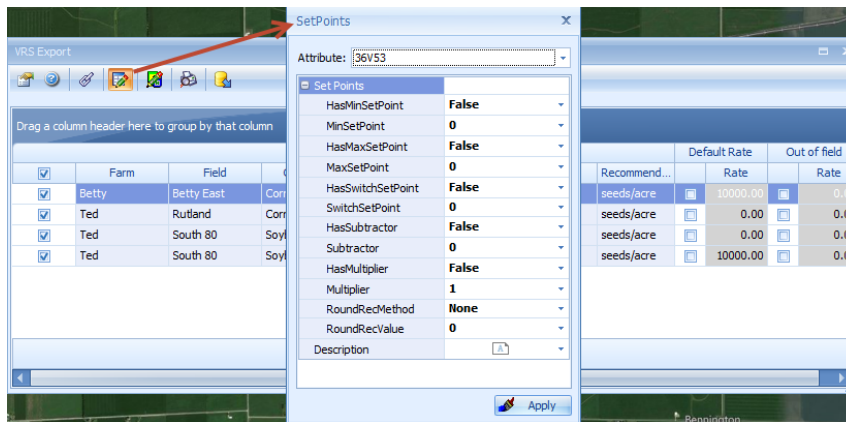


June 2, 2021

## Release Notes

### Enhancements

- Updated Climate FieldView API v4 to support non-seeding application field ops in addition to planting and harvest via wireless data transfer.
- Added a more robust message to the John Deere Add-On to help identify the source of the problem fetching machines and the potential fix.
- Added option to assign product setpoints in bulk in VRS Export.



### Bug Fixes

- Added support for VRS seeding recommendation reports in units of seeds/hectare.
- Fixed issue with Apply GPS Shift to correctly save the fieldop with new settings.
- Removed yield min/max filters from Advanced Treatment Analysis as they are not designed to work in the manner expected.
- Corrected issue in the Layer Surfacer tool where Layer Filters were not properly honored.
- Fixed problem where the Farm & Field Proposal report skipped hybrids imported from other programs.
- Resolved issue where planting reports skipped aggregate values such as min, max, and average when a fixed-range theme is applied.
- Fixed a bug where VRF Export grouping failed if the attribute name in the layer did not match the product name.
- Corrected issue causing AgLeader ILF files to get the message "no data converted".

### Card Manager Updates

- Resolved issue where Kinze planting data seed rates did not display.
- Fixed problem where GS4 product mix liquid application data failed to import.
- Improved ability to recognize TopCon Taskdata files.